

Prestained Protein marker, Middle Range

Cat No : PT-PS-01

Size : 1 vial, 500 µl per vial

Description : Pre-stained Protein Marker is a mixture of purified proteins covalently coupled to a blue dye that resolves to 7 bands when electrophoresed. This standard provides a quick way to assess the quality of an electrophoretic transfer and act as a control in repetitive blotting experiments.

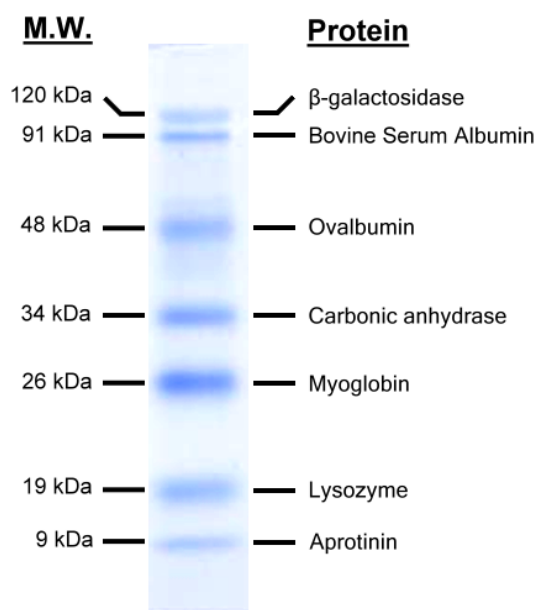
Contents : Approximately 1.2 mg total protein in 30%(v/v) glycerol, 3% SDS, 10 mM Tris (pH 6.8), 10 mM DTT, 2 mM EDTA. Thaw the solution at RT or heat it to 40°C for few seconds to dissolve any solids which may have precipitated at -20°C. Load 10 µl/well for full length gels (16-20 cm) or 5 µl/well for mini-gel.

Storage : -20 °C stable for 1 year.

Figure. SDS polyacrylamide gels run in the Mini-PROTEAN® II cell according the method of Laemmli.

Prestained Protein Marker, Middle range run on a 12% gel.

Protein	Size (kDa)	Source
β-galactosidase	120	<i>Escherichia coli</i>
Bovine Serum Albumin	91	Bovine serum
Ovalbumin	48	Chicken egg white
Carbonic anhydrase	34	Bovine erythrocytes
Myoglobin	26	Equine skeletal muscle
Lysozyme	19	Chicken egg white
Aprotinin	9	Bovine lung



For Research Using Only.

Please do not hesitate to contact us if you have any questions.

Manufactured for and distributed by Protech Technology Enterprise Co.,Ltd
TEL : +886-2-2655-7677 / FAX : +886-2-2655-7601 / Toll Free : 0800-231-530
E-MAIL: service@bio-protech.com.tw ; tech@bio-protech.com.tw
WEB: <http://www.bio-protech.com.tw>